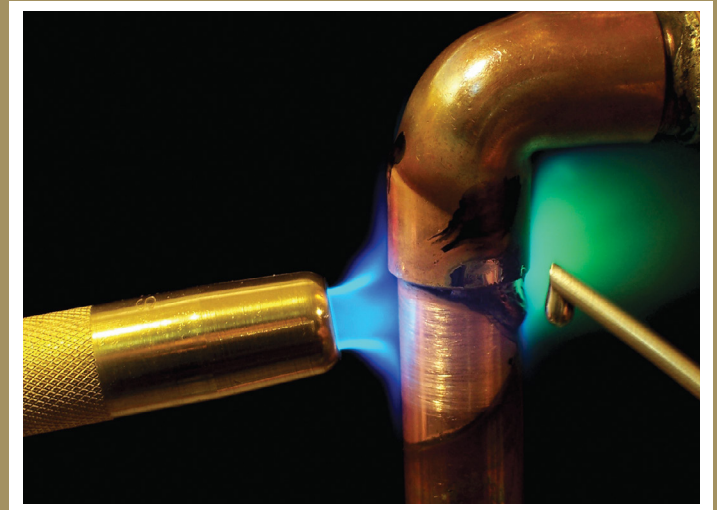




Solder plus Support

PLUMBING & INDUSTRIAL SOLDERING MATERIALS



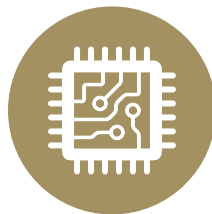
AIM, a leading global manufacturer of solder assembly materials, was founded in 1936 and has been manufacturing premium solder materials since 1975. AIM is a multi-faceted manufacturing company, with production facilities located in the United States, Canada, Mexico, Europe and China, as well as additional local support offices throughout the globe.

AIM'S PREMIUM PLUMBING AND INDUSTRIAL SOLDERS are professionally proven and supported worldwide. AIM produces solid and cored wire solder, bar solder, liquid flux, solder paste, adhesives, preforms and specialty alloys for the plumbing industry, heat exchange, electronics, and numerous other industries, as well as range of custom alloys for various specialized applications.

AIM'S SOLDER RETAIL LINE was designed with the end users in mind. AIM has created small, consumer style packaging in blister cards as well as individually packaged starter kits. The goal is to make our premium solder wire and flux products accessible to everyone from do-it-yourselfers to professionals. This new retail line of solder products is available for a variety of different applications such as plumbing, electrical repairs and general solder applications. AIM has all of your soldering needs covered. **CONTINUE READING FOR MORE INFORMATION ON:**



AIM
**PLUMBING
SOLDER**



AIM
**ELECTRICAL
SOLDER**



AIM
**GENERAL PURPOSE
SOLDER**



AQUASOL

- ▶ **ALLOY COMPOSITION:**
95.75% Tin, 3% Copper,
1% Antimony, 0.25% Silver
- ▶ **ALLOY MELTING TEMP:**
214°C-234°C (416°F-454°F)
- ▶ **COMPLIANCE:**
ASTM B32, NSF/ANSI 61 &
372, UPC



PREMIUM PLUMBING WIRE (LEAD-FREE, SILVER BEARING)

AQUASOL is a solder wire manufactured with a premium high purity alloy of tin, copper, antimony and silver. Ideal for soldering copper and brass plumbing joints.

ITEM #	PACKAGING DESCRIPTION	WEIGHT			DIAMETER		BOX/CARTON QTY
		LB	KG	OZ	MM	IN	
17649	Blister Card	0.25	0.113	4	3	0.125	12
17650	Plastic Spool	0.5	0.227	8	3	0.125	24
17651	Plastic Spool	1	0.454	16	3	0.125	12
17656	Blister Card Kit with Brush and Flux	0.25	0.113	4	3	0.125	6

DURA-PURE 95/5

- ▶ **ALLOY COMPOSITION:**
95% Tin, 5% Antimony
- ▶ **ALLOY MELTING TEMP:**
232°C-240°C (450°F-464°F)
- ▶ **COMPLIANCE:**
ASTM B32, NSF/ANSI 61 &
372, UPC



PLUMBING SOLDER WIRE (LEAD-FREE)

DURA-PURE 95/5 is a lead-free plumbing solder wire manufactured with a high purity alloy of 95% tin and 5% antimony. Ideal for use on copper & brass plumbing joints.

ITEM #	PACKAGING DESCRIPTION	WEIGHT			DIAMETER		BOX/CARTON QTY
		LB	KG	OZ	MM	IN	
17658	Blister Card	0.25	0.113	4	3	0.125	12
17659	Plastic Spool	0.5	0.227	8	3	0.125	24
17660	Plastic Spool	1	0.454	16	3	0.125	12

NITROFLUX

- ▶ **COMPLIANCE:**
ASTM B813



SOLDERING PASTE FLUX

NITROFLUX is a solder paste flux, compatible with all lead-free and common soft solders. NitroFlux promotes excellent solderability and cleans as it solders in all temperatures. Specifically designed for use on copper, brass, tin and lead.

ITEM #	PACKAGING DESCRIPTION	WEIGHT			BOX/CARTON QTY
		LB	KG	OZ	
17652	Blister Card Kit with Brush	0.125	0.057	2	6
89262	Plastic Container	1	0.454	16	12
89261	Plastic Container	0.125	0.057	2	48



ELECTRISOL

- ▶ **ALLOY COMPOSITION:**
95.75% Tin, 3% Copper, 1% Antimony, 0.25% Silver
- ▶ **ALLOY MELTING TEMP:**
214°C-234°C (416°F-454°F)



ELECTRICAL REPAIR WIRE (LEAD-FREE, SILVER BEARING, 2% ROSIN CORE)

ELECTRISOL is a lead-free electrical repair solder wire comprised of tin, copper, antimony and silver with a rosin flux core that is non-corrosive and non-conductive and is suitable for basic electrical repairs.

ITEM #	PACKAGING DESCRIPTION	WEIGHT			DIAMETER		BOX/CARTON QTY
		LB	KG	OZ	MM	IN	
15916	Coil Blister Card	0.031	0.014	0.5	1	0.040	12
17653	Blister Card	0.25	0.113	4	1.5	0.062	12
17654	Plastic Spool	0.5	0.227	8	1.5	0.062	24
15917	Plastic Spool	1	0.454	16	1.5	0.062	12

ELECTRISOL 40/60

- ▶ **ALLOY COMPOSITION:**
40% Tin, 60% Lead
- ▶ **ALLOY MELTING TEMP:**
183°C-238°C (361°F-460°F)



ELECTRICAL REPAIR WIRE (Sn40/Pb60, 2% ROSIN CORE)

ELECTRISOL 40/60 is a leaded electrical repair solder wire comprised of 40% tin and 60% lead with a rosin flux core that is non-corrosive and non-conductive and is suitable for basic electrical repairs.

ITEM #	PACKAGING DESCRIPTION	WEIGHT			DIAMETER		BOX/CARTON QTY
		LB	KG	OZ	MM	IN	
15918	Coil Blister Card	0.031	0.014	0.5	1	0.040	12
17663	Blister Card	0.25	0.113	4	1.5	0.062	12
15919	Plastic Spool	0.5	0.227	8	1.5	0.062	24
15920	Plastic Spool	1	0.454	16	1.5	0.062	12

ELECTRISOL 60/40

- ▶ **ALLOY COMPOSITION:**
60% Tin, 40% Lead
- ▶ **ALLOY MELTING TEMP:**
183°C-188°C (361°F-370°F)



ELECTRICAL REPAIR WIRE (Sn60/Pb40, 2% ROSIN CORE)

ELECTRISOL 60/40 is a leaded electrical repair solder wire comprised of 60% tin and 40% lead with a fine diameter and a rosin flux core that is non-corrosive, non-conductive and is suitable for electrical repairs. Ideal for use on circuit boards, radios, speakers, televisions, motors, appliances and more.

ITEM #	PACKAGING DESCRIPTION	WEIGHT			DIAMETER		BOX/CARTON QTY
		LB	KG	OZ	MM	IN	
15921	Coil Blister Card	0.031	0.014	0.5	1	0.040	12
17664	Blister Card	0.25	0.113	4	0.81	0.032	12
15922	Plastic Spool	0.5	0.227	8	0.81	0.032	24
15923	Plastic Spool	1	0.454	16	0.81	0.032	12

CONTINUED ON NEXT PAGE.



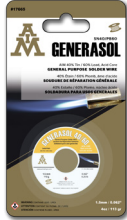
AIM GENERAL PURPOSE SOLDER



Solder plus Support

GENERASOL

- ▶ **ALLOY COMPOSITION:**
95.75% Tin, 3% Copper, 1% Antimony, 0.25% Silver
- ▶ **ALLOY MELTING TEMP:**
214°C-234°C (416°F-454°F)



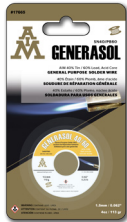
GENERAL PURPOSE WIRE (LEAD-FREE, SILVER BEARING, 2% ACID CORE)

GENERASOL is a lead-free general purpose solder comprised of tin, copper, antimony and silver with an acid flux core which provides rapid oxide removal and great bonding. Suitable for repair on sheet metal joints, radiators, gutters and more / NOT designed for plumbing, electrical and electronic applications.

ITEM #	PACKAGING DESCRIPTION	WEIGHT			DIAMETER		BOX/CARTON QTY
		LB	KG	OZ	MM	IN	
15927	Coil Blister Card	0.031	0.014	0.5	1.5	0.062	12
17655	Blister Card	0.25	0.113	4	1.5	0.062	12
15930	Plastic Spool	0.5	0.227	8	1.5	0.062	24
15928	Plastic Spool	1	0.454	16	1.5	0.062	12

GENERASOL 40/60

- ▶ **ALLOY COMPOSITION:**
40% Tin, 60% Lead
- ▶ **ALLOY MELTING TEMP:**
183°C-238°C (450°F-464°F)



GENERAL PURPOSE WIRE (Sn40/Pb60, 2% ACID CORE)

GENERASOL 40/60 is a general purpose solder wire comprised of 40% tin and 60% lead with an acid core which provides rapid oxide removal and great bonding. Suitable for repair on sheet metal joints, radiators, gutters and more / NOT designed for plumbing, electrical and electronic applications.

ITEM #	PACKAGING DESCRIPTION	WEIGHT			DIAMETER		BOX/CARTON QTY
		LB	KG	OZ	MM	IN	
15924	Coil Blister Card	0.031	0.014	0.5	1.5	0.062	12
17665	Blister Card	0.25	0.113	4	1.5	0.062	12
15926	Plastic Spool	0.5	0.227	8	1.5	0.062	24
15925	Plastic Spool	1	0.454	16	1.5	0.062	12

DURA-PURE 50/50

- ▶ **ALLOY COMPOSITION:**
50% Tin, 50% Lead
- ▶ **ALLOY MELTING TEMP:**
183°C-212°C (361°F-414°F)



GENERAL REPAIR (Sn50/Pb50, SOLID CORE)

DURA-PURE 50/50 is a solder wire manufactured with a high purity alloy of 50% tin and 50% lead, suitable for most industrial applications such as stained glass, roofing, sheet metal and automotive applications.

ITEM #	PACKAGING DESCRIPTION	WEIGHT			DIAMETER		BOX/CARTON QTY
		LB	KG	OZ	MM	IN	
17657	Blister Card	0.25	0.113	4	3	0.125	12
17661	Plastic Spool	0.5	0.227	8	3	0.125	24
17662	Plastic Spool	1	0.454	16	3	0.125	12

DURA-PURE 96/4

- ▶ **ALLOY COMPOSITION:**
96% Tin, 4% Silver
- ▶ **ALLOY MELTING TEMP:**
221°C-225°C (430°F-437°F)

SPECIALTY SOLDER WIRE (Sn96/Ag4, SOLID CORE)

DURA-PURE 96/4 is a specialty solid solder wire comprised of 96% tin and 4% silver used for high-temperature/high reliability interconnect applications, suitable for HVAC, jewelry and electronic applications and more.

ITEM #	PACKAGING DESCRIPTION	WEIGHT			DIAMETER		BOX/CARTON QTY
		LB	KG	OZ	MM	IN	
84588	Blister Card	0.063	0.028	1	1.5	0.125	12